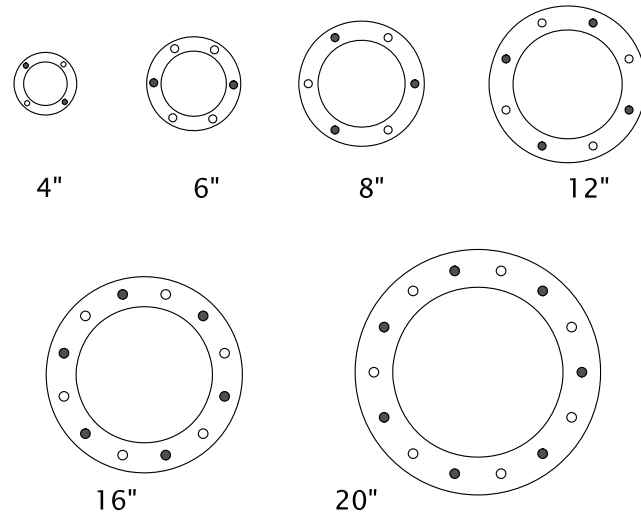


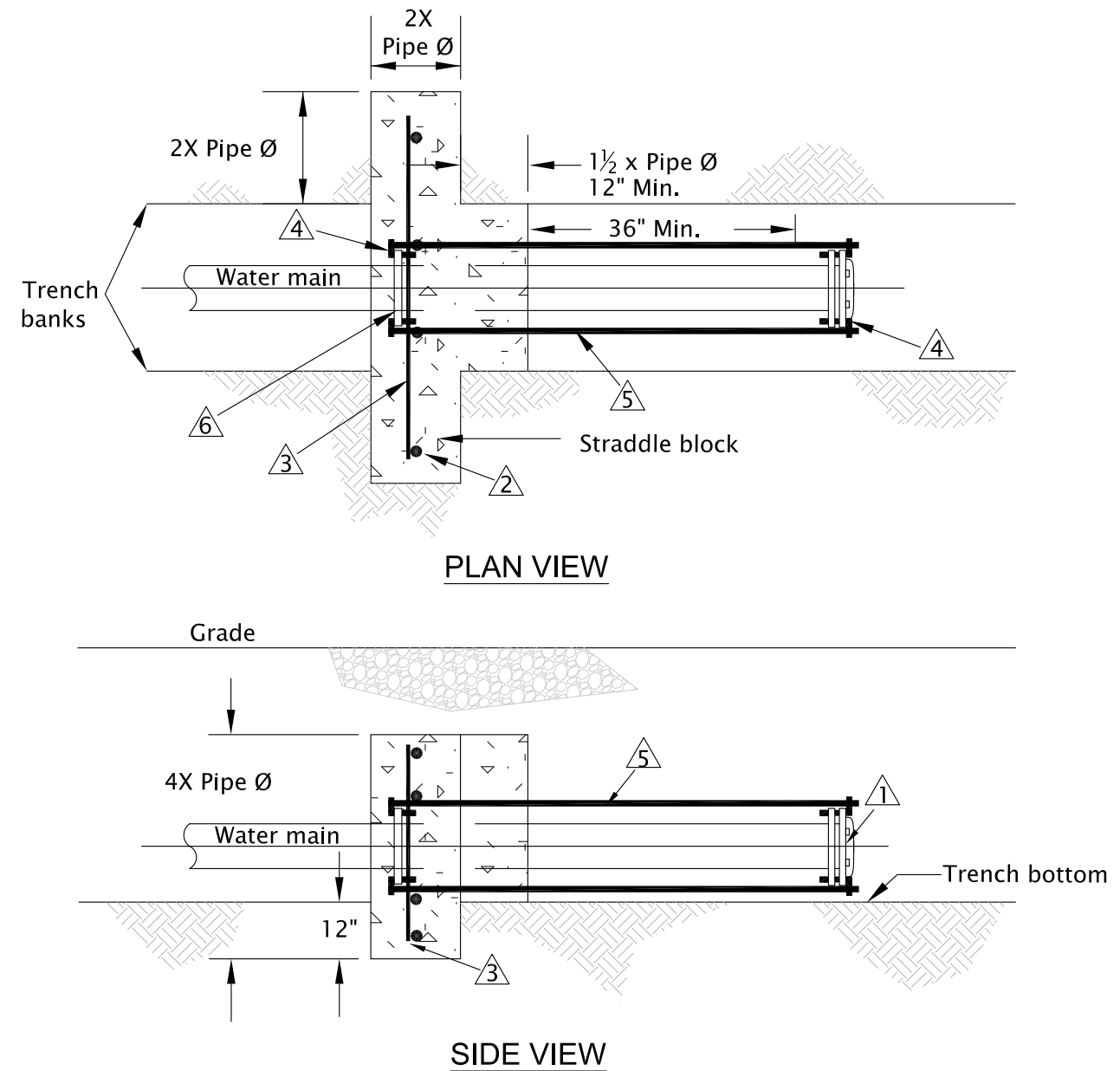
Tie Rod Bolt Pattern

- 4" 2 Tie rods
- 6" 2 Tie rods
- 8" 3 Tie rods
- 12" 4 Tie rods
- 16" 6 Tie rods
- 20" 7 Tie rods



General Notes:

- 1. Mechanical joint fitting, tee, valve, plug, etc.
- 2. 4 each - no. 4 bars (vertical)
- 3. 4 each - no. 4 bars (horizontal)
- 4. 90° eye bolt, 3/4" UNC rolled thread. Ductile lugs not accepted.
- 5. 3/4" Ø steel all-thread, UNC rolled thread, zinc coated.
- 6. Retainer gland with set screws.
- 7. All reinforcing bars shall be tied and in place prior to pouring concrete.
- 8. See concrete standards page for additional requirements.



The selection and use of this standard drawing, while designed in accordance with generally accepted engineering principles and practices, is the sole responsibility of the user.		Designed By: STAFF
		Drawn By: KJD
		Checked By: MPT
		Approved: JMC



CITY OF GRANTS PASS
 101 Northwest 'A' Street
 Grants Pass, OR 97526
 (541) 450-6060 ph (541) 476-9218 fax

No.	Date	Revisions	App. By

STRADDLE BLOCK

2018

DWG. NO. GP216