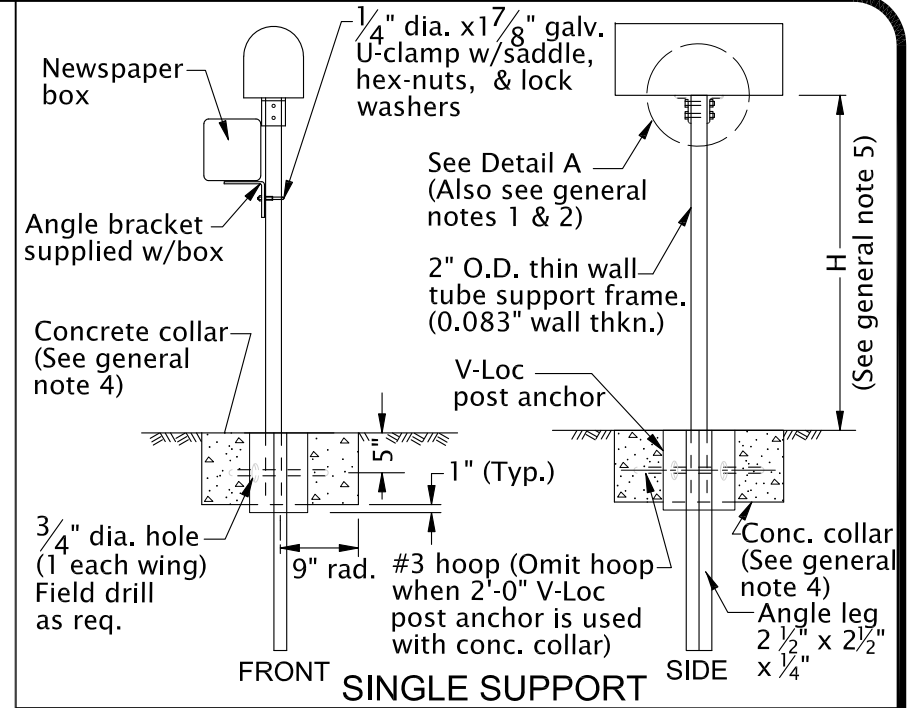


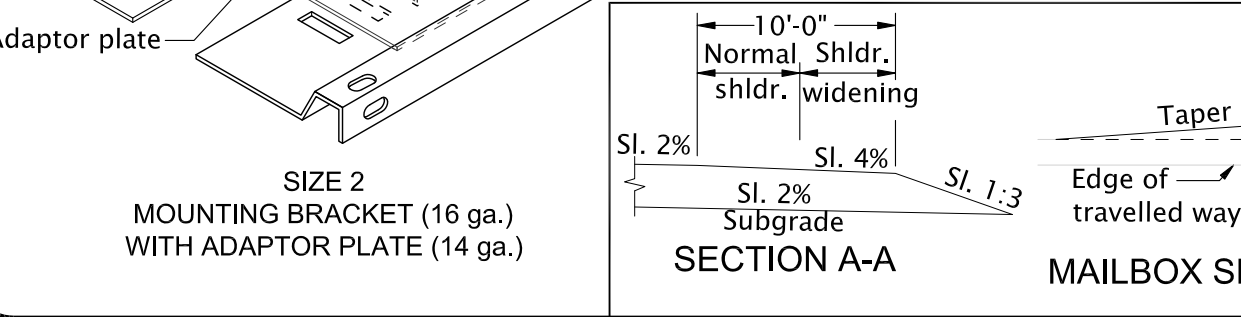
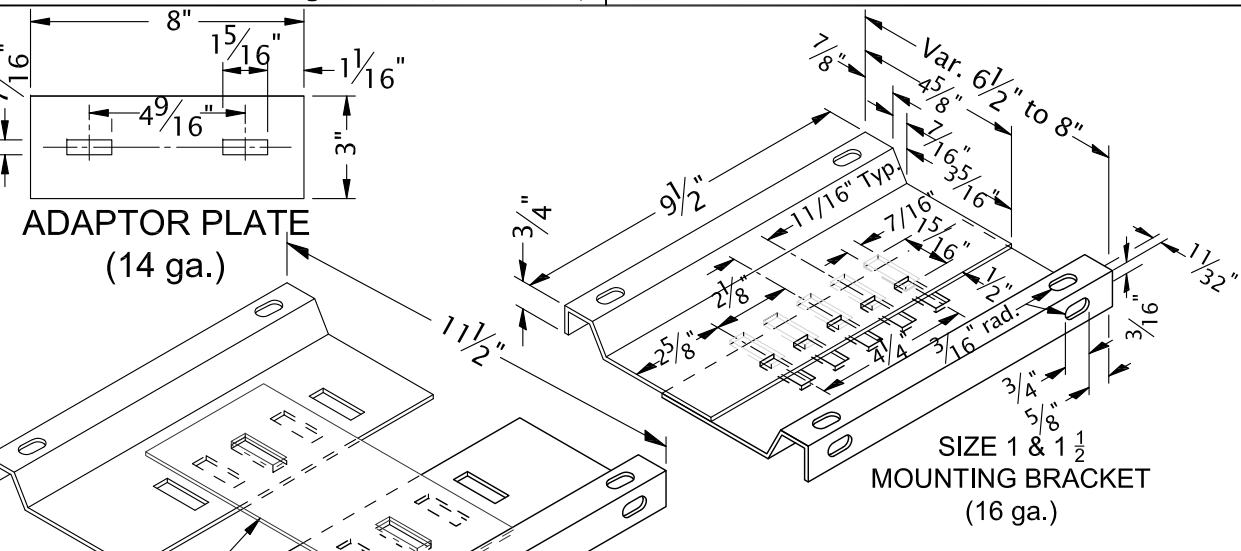
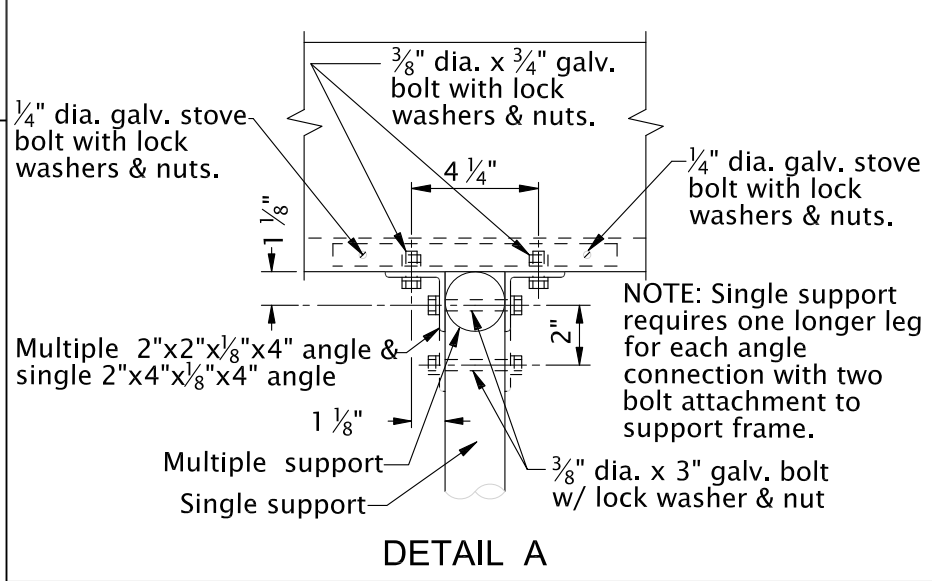
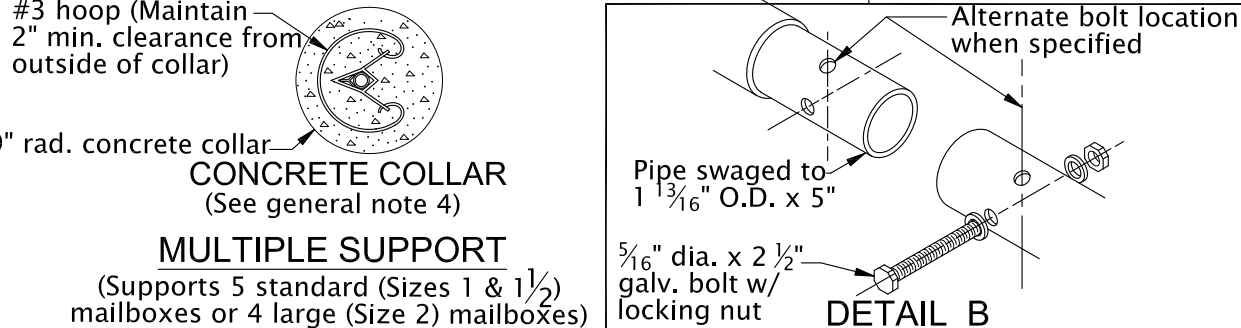
**TABLE A**  
V-LOC POST ANCHOR USE CHART

MAILBOX LOCATION	Single Support (ft.)	Multiple Support (ft.)
Through new or existing A.C.	2'-0"	2'-0"
Through well consolidated mat'l	2'-0" *	2'-6"
Through new rock surfacing & subgrade	2'-6"	2'-0" conc. collar
Through new rock surfacing & subgrade, subject to saturated soil or freeze/thaw conditions.	2'-6" conc. collar	2'-6" conc. collar

\* Use 2'-6" with size 2 mailbox.  
\*\* Use if conditions are severe.



- General Notes:**
1. Angle connections to be parallel to traffic flow for Size 2 mailbox mounted on single post.
  2. All holes in the tube support frame are to be predrilled by the manufacturer.
  3. Size 2 mailbox mounted on a multiple support requires 2 each: 3/8" dia. x 5/8" galv. bolts with lock washers and nuts to attach the adaptor plate to the mounting bracket. The unit will then require 4 angle connections to attach it to the formed tube support frame. See Detail A.
  4. Provide conc. collar when any of the following cond. exist:
    - a. when required in Table A
    - b. when required by project plans
    - c. as directed by the City Engineer
 Concrete collar, when required, to be poured in place after V-Loc post anchor has been installed, level and plumb. Do not excavate below bottom of V-Loc post anchor. Care shall be taken that no concrete is placed within anchor.
  5. Mounting height (H) shall be 42" nominal, measured from vehicle driving surface.
  6. All materials & workmanship shall be in accordance with current Oregon Standard Specification for Highway Construction.
  7. Mailbox door shall be 6"-12" from face of curb or 8"-12" (0"-12" if turnout is provided) from edge of pavement (for non-curbed section)
  8. 4' min. spacing between mult. supports and between mult. & single support. H (3/4 H min.) spacing between single supports.



The selection and use of this standard drawing, while designed in accordance with generally accepted engineering principles and practices, is the sole responsibility of the user.

Designed By: STAFF  
 Drawn By: KJD  
 Checked By: MPT  
 Approved: JMC

No.	Date	Revisions	App. By



**CITY OF GRANTS PASS**  
 101 Northwest 'A' Street  
 Grants Pass, OR 97526  
 (541) 450-6060 ph (541) 476-9218 fax

**MAILBOX AND INSTALLATION**

2018  
 DWG. NO. GP100