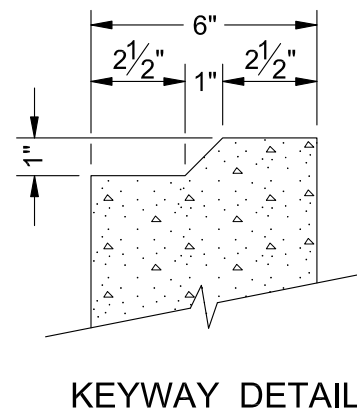
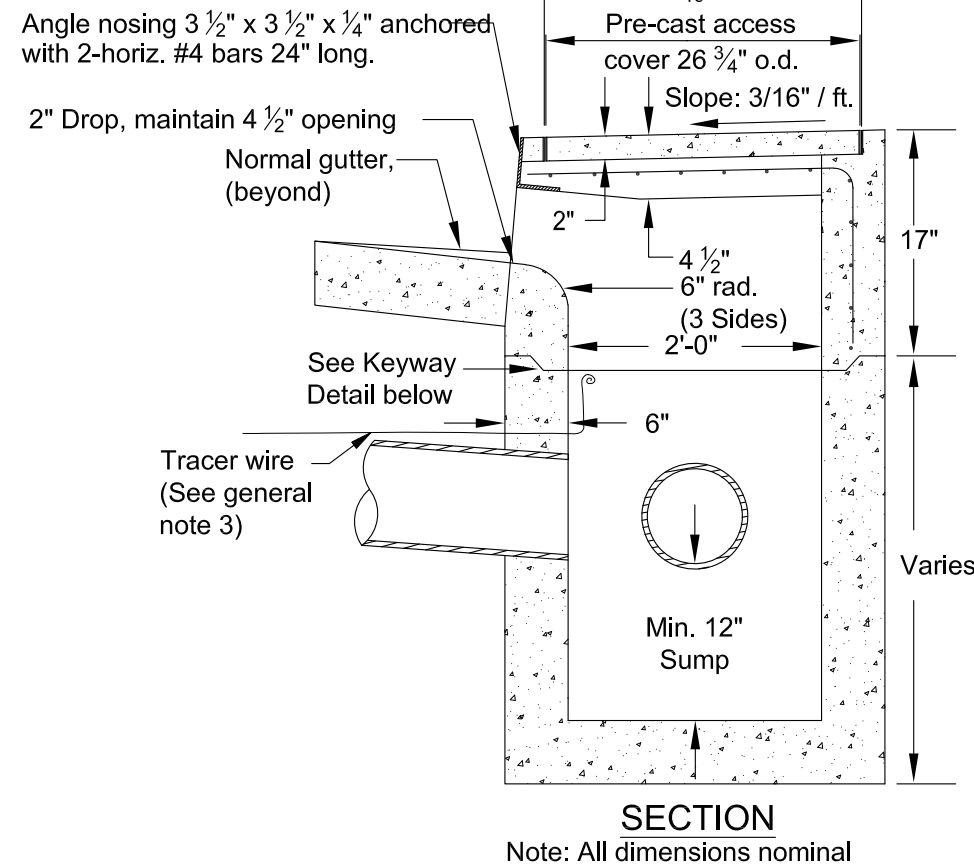
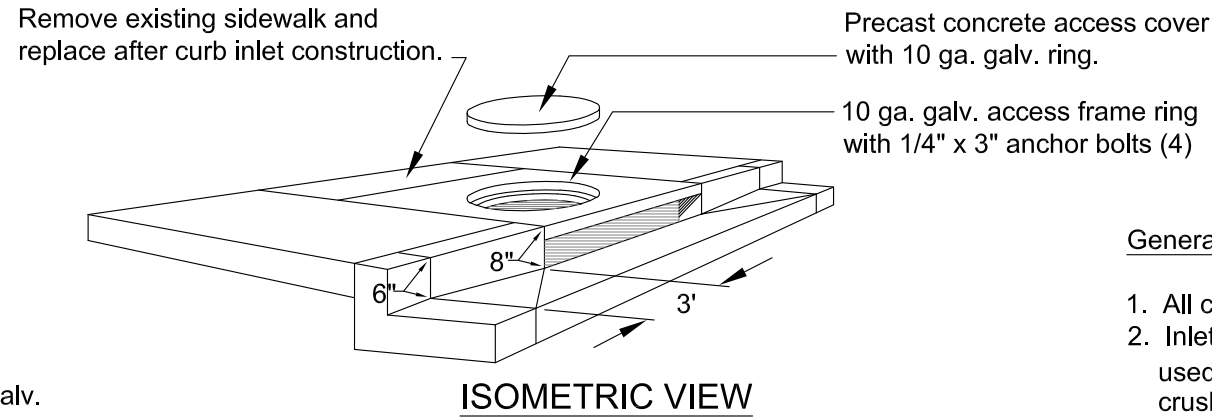



Form inside and outside walls per section 470.43 of the APWA/ODOT "Standard Specifications for Highway Construction".



General Notes:

1. All concrete shall be commercial grade concrete.
2. Inlet base may be cast-in-place or precast. Where precast inlet base is used as an alternate, a 4" compacted leveling bed of sand or 1/4"-0 crushed aggregate shall be provided. All precast inlets shall conform to requirements of ASTM C913.
3. See ODOT Std. Dwg. RD336 for tracer wire details, or approved alternate.
4. See Std. Dwg. GP700 for curb and gutter details.
5. Location, elevation, diameter, slope, and number of pipe(s) varies, see project plans.
6. Max. pipe diameter varies with pipe material.
7. See ODOT Std. Dwg. RD339 for pipe to structure connections.
8. See concrete standards page for additional requirements.
9. Floor shall be poured on base approved by City Engineer: Undisturbed stable soil, compacted base (95% R.D., 3/4"-0" crushed rock, min., 6" thick), or other base as approved.
10. Surface cross-slope for new construction shall be 3/16" rise per foot from top of curb to back of sidewalk.
11. Set section joints in 1:2 mortar and mortar sealant ST-8, 1" wide.
12. Sealant shall meet federal spec. SS-5-00201 (CSA-FSS).
13. All concrete walls shall be formed (inside and outside) and vibrated while being placed to remove voids.
14. Concrete shall not be placed until forms have been inspected by the City Engineer.
15. Pipe(s) shall be flush with inside wall.
16. All metal parts shall be hot-dip galvanized after fabrication.
17. An encroachment permit is required prior to starting any work within right-of-way.

The selection and use of this standard drawing, while designed in accordance with generally accepted engineering principles and practices, is the sole responsibility of the user.		Designed By: STAFF	
		Drawn By: KJD	
		Checked By: MPT	
		Approved: JMC	
No.	Date	Revisions	App. By

CITY OF GRANTS PASS
101 Northwest 'A' Street
Grants Pass, OR 97526
(541) 450-6060 ph (541) 476-9218 fax

CONCRETE CURB INLET TYPE "B"

2018
DWG. NO. GP371