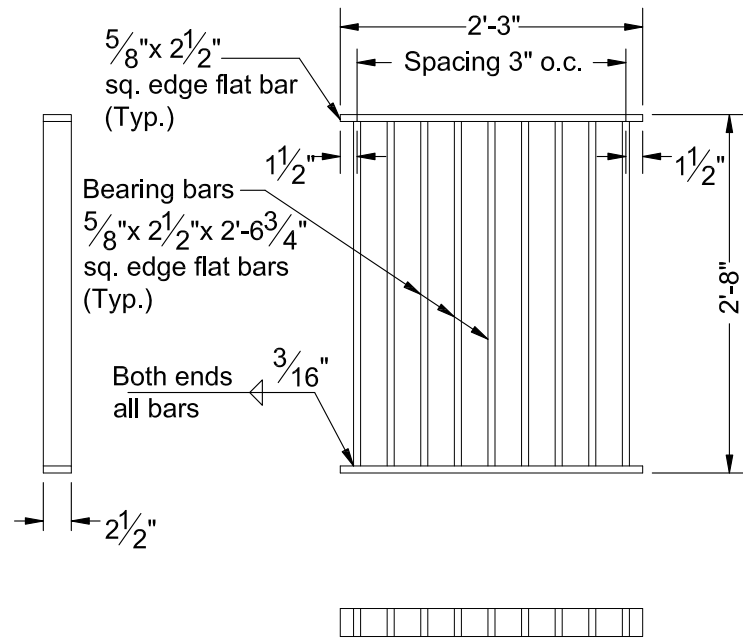
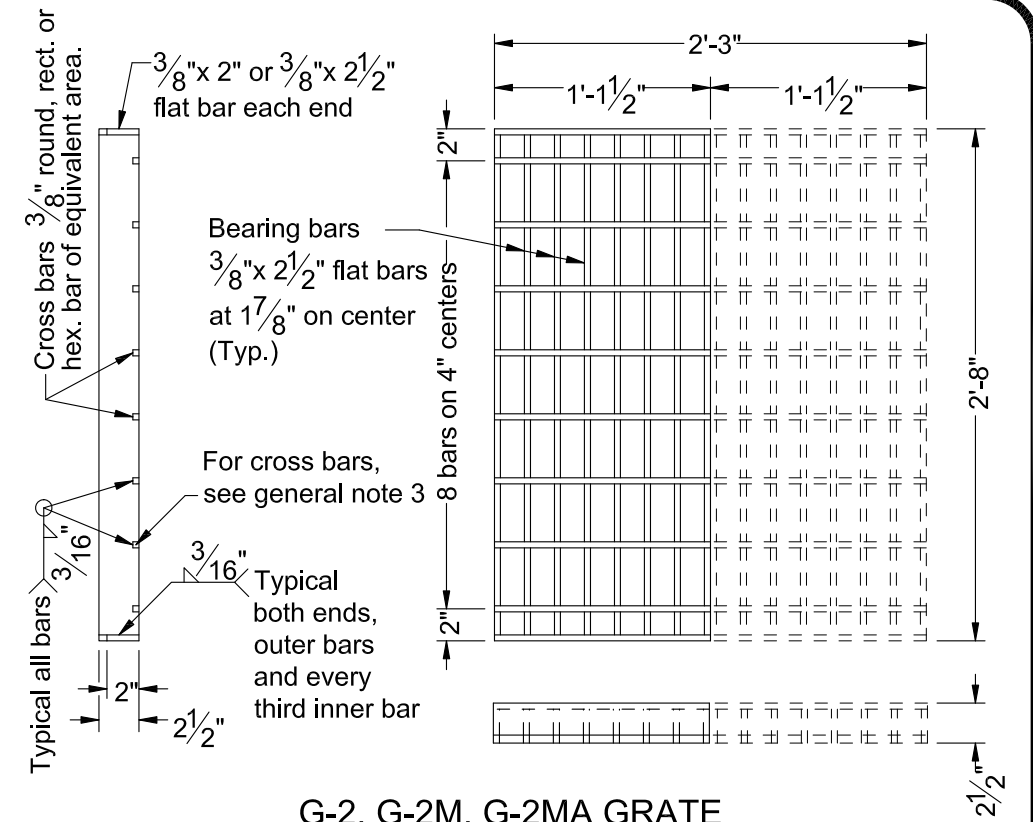


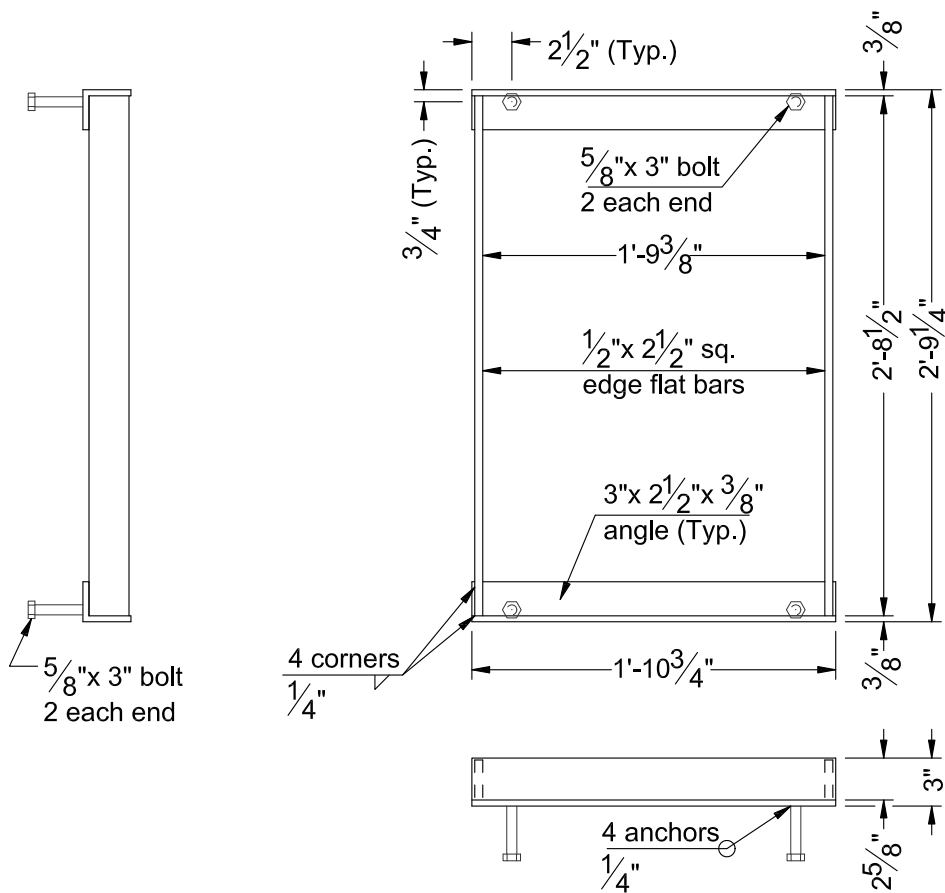
**G-2, G-2M, G-2MA FRAME**  
(See general note 2)



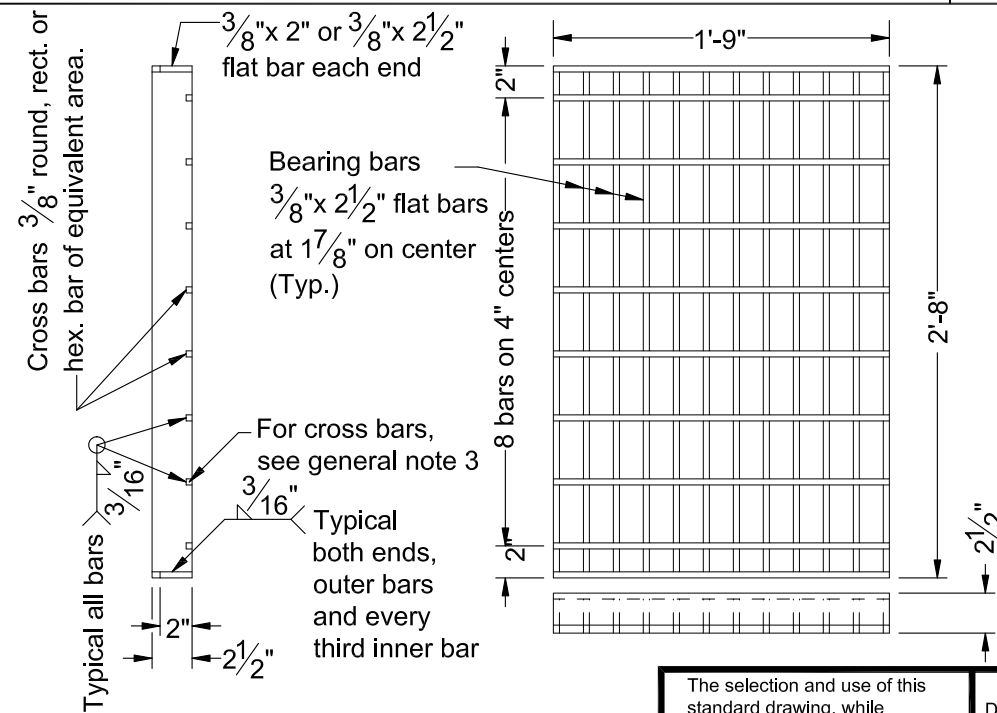
**G-2, G-2M, G-2MA GRATE (TYPE 1)**  
(See general note 2)



**G-2, G-2M, G-2MA GRATE (TYPE 2)**  
(Bicycle-safe)  
(2 grates required per inlet, as shown)



**G-1 FRAME**



**G-1 GRATE (TYPE 2)**  
(Bicycle-safe)

**General Notes:**

1. For inlet details, see appropriate inlet standard drawing(s). Catch basin, frame, and grates shall meet H20 loading.
2. Type 1 grate allowed only in locations not subject to bicycle or pedestrian use.
3. 3/8" cross bars shall be flush with the top of grate surface and may be fillet welded, resistance welded or electroforged to bearing bars.
4. Hot dip galvanize after fabrication.
5. Cast iron grate and frame are acceptable alternates. See ODOT's QPL.

The selection and use of this standard drawing, while designed in accordance with generally accepted engineering principles and practices, is the sole responsibility of the user.			Designed By: STAFF
			Drawn By: KJD
			Checked By: MPT
			Approved: JMC
No.	Date	Revisions	App. By



**CITY OF GRANTS PASS**  
101 Northwest 'A' Street  
Grants Pass, OR 97526  
(541) 450-6060 ph (541) 476-9218 fax

**FRAMES & GRATES FOR CONCRETE INLETS**

2018

DWG. NO. GP365