

General Notes:

- All concrete shall be commercial grade concrete.
- Graphics show G-1 inlet with Type 2 grate. See Table A for inlet dimensions. Type 1 grate allowed only in locations not subject to bicycle or pedestrian use. For frame and grate details, see Std. Dwg. GP365.
- Catch basin, frame, and grates shall meet H2O loading.
- 5/8" cross bars shall be flush with the grate surface and may be fillet welded, resistance welded or electroforged to bearing bars.
- Max. pipe diameter varies with pipe material.
- Do not use in locations where inlet can be struck by an errant vehicle, or provide shielding of inlet.
- Where precast inlets are used as an alternate, a 4" compacted leveling bed of sand or 1/4"-0 crushed aggregate shall be provided. All precast inlets shall conform to requirements of ASTM C913.
- See ODOT Std. Dwg. RD339 for pipe to structure connections.
- See Std. Dwg. GP363 for gutter transition section, when curb and gutter are required.
- For curb details, see Std. Dwg. GP700.
- 3/4" preformed filler (in concrete pavement or gutter only) to extend through thickness of concrete.
- Location, elevation, diameter, slope, and number of pipe(s) varies, see project plans.
- See concrete standards page for additional requirements.
- Form inside and outside walls per section 470.43 of the ODOT/APWA "Standard Specifications for Construction" manual.
- Vibrate concrete during placement to remove voids.
- Frame and grate shall be the work of a certified welder, and shall not be placed unless approved by City Engineer. (a pre-cast base and inlet with pre-fabricated grate may be used with approval of City Engineer).
- Concrete shall not be placed until all forms have been inspected by the City Engineer.
- An encroachment permit is required prior to starting any work within right of way.
- Type G-2M and type G-2MA inlets are for use in areas without traffic, bicycles or pedestrians, such as medians and ditches.
- "G" type inlets adjacent to curb only to be used with City Engineer approval.

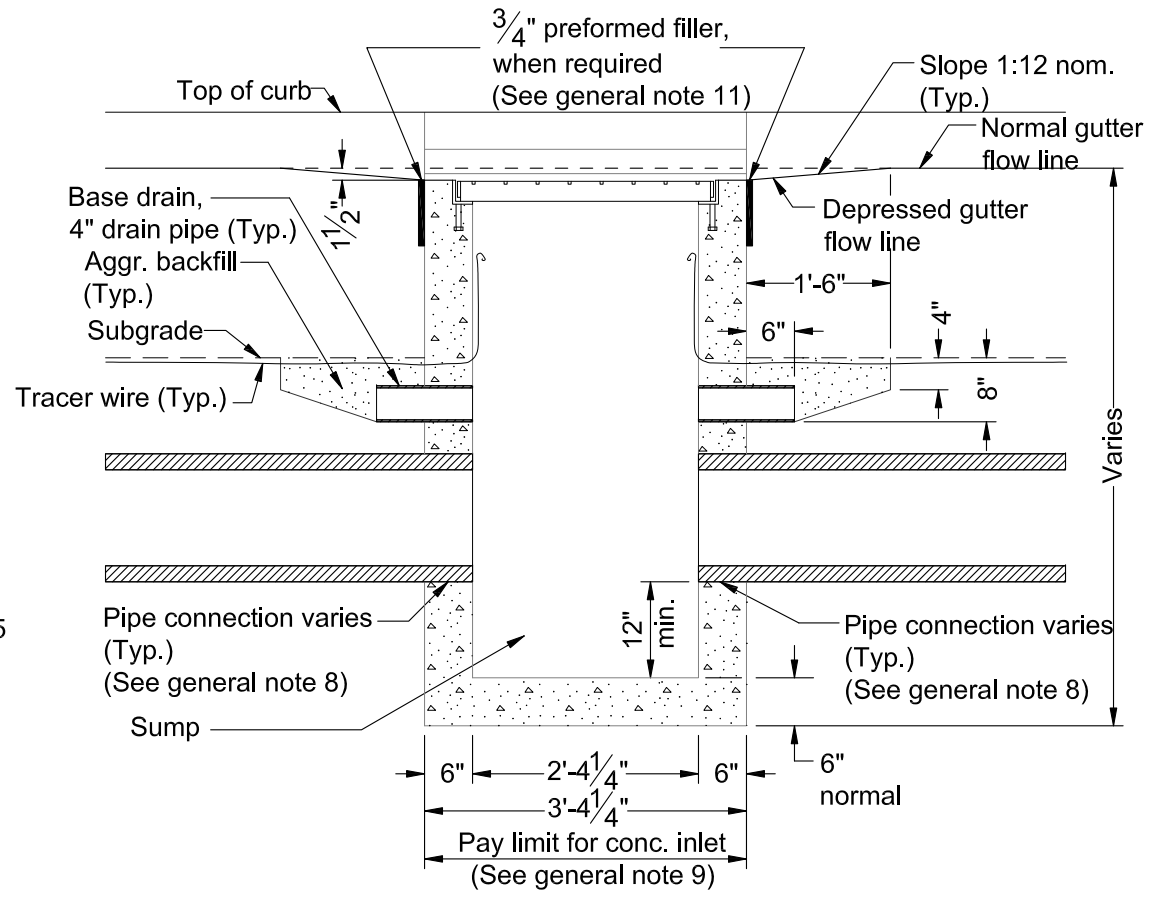
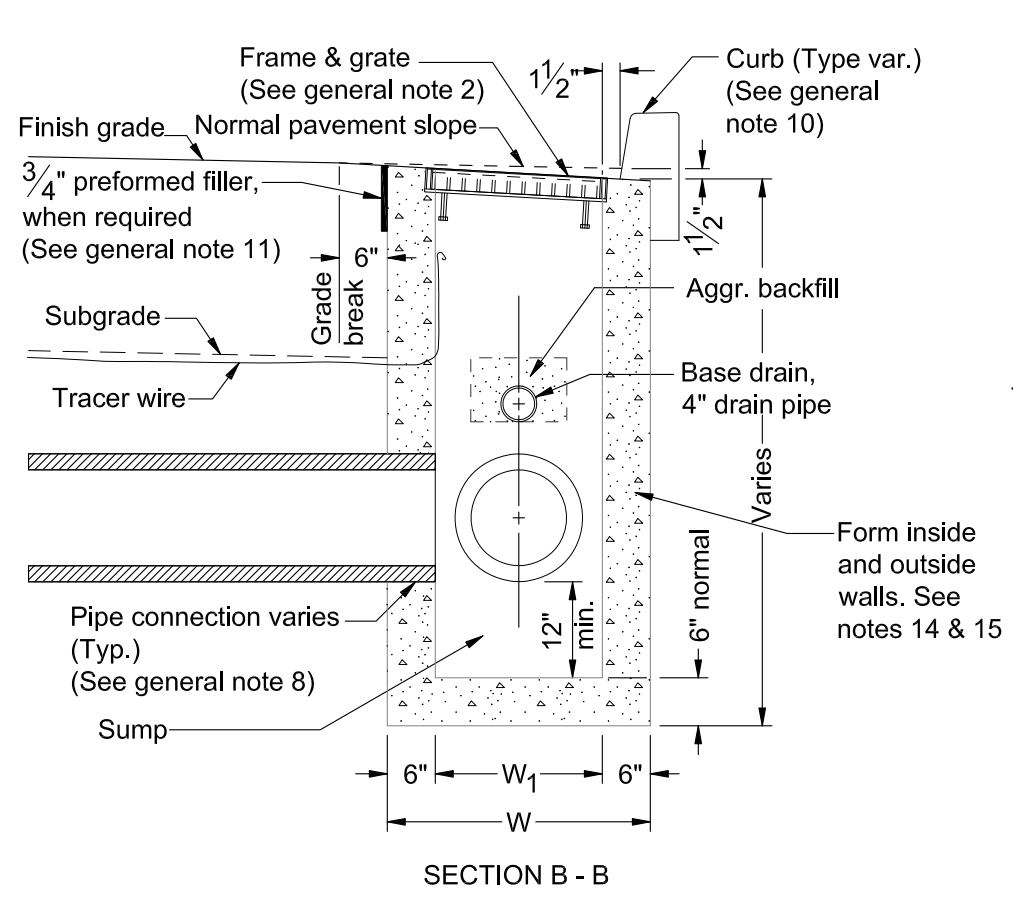
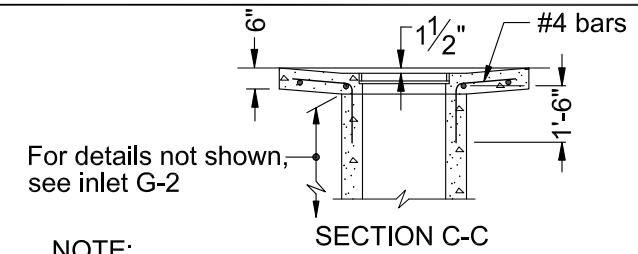
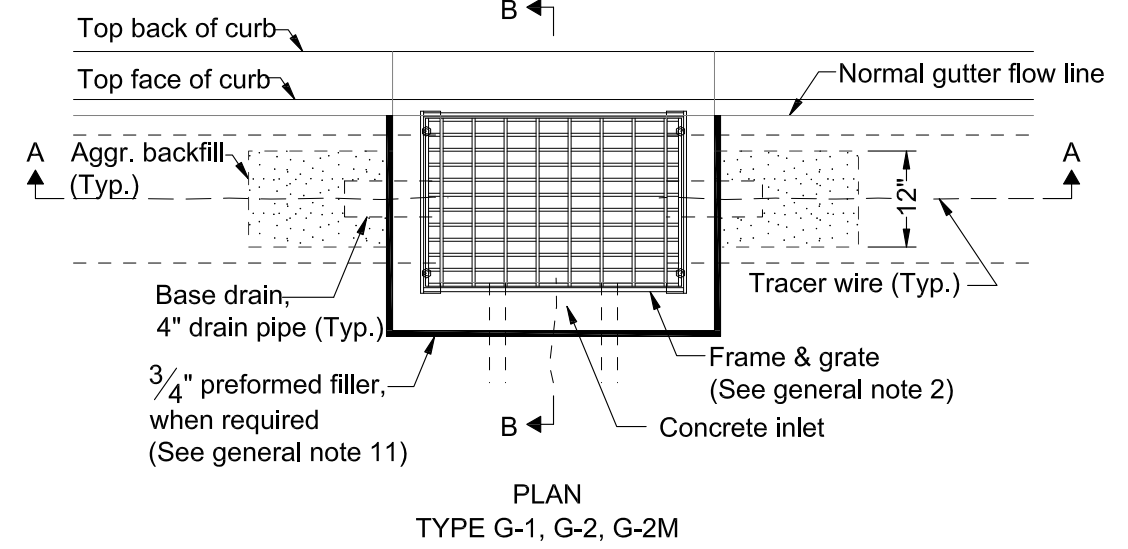
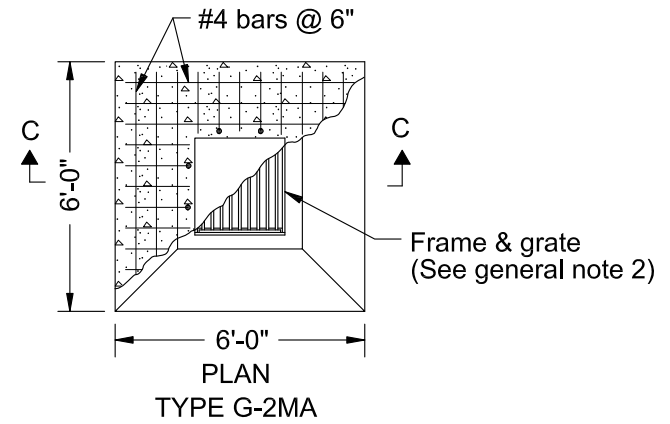


TABLE A		
INLET TYPE	W	W ₁
G-1	2'-8 7/8"	1'-8 7/8"
G-2, G-2M, G-2MA	3'-3 3/8"	2'-3 3/8"



NOTE:
All reinforcement to be placed 2" clear of nearest face of concrete unless shown or noted otherwise



The selection and use of this standard drawing, while designed in accordance with generally accepted engineering principles and practices, is the sole responsibility of the user.

Designed By: STAFF
 Drawn By: KJD
 Checked By: MPT
 Approved: JMC



CITY OF GRANTS PASS
 101 Northwest 'A' Street
 Grants Pass, OR 97526
 (541) 450-6060 ph (541) 476-9218 fax

No.	Date	Revisions	App. By

"G" TYPE INLETS

2018

DWG. NO. GP364