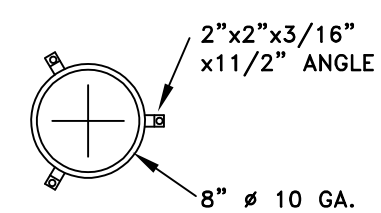


COVER FOR AIR RELEASE VENT



DETAIL "A" TOP VIEW

**NOTES**

1. METER BOX TO BE FLUSH WITH FINISHED GRADE.
2. EXPOSED STEEL PIPE AND ANCHOR BOLTS TO BE PRIMERED AND PAINTED WITH 2 COATS OF 0063 SCHOOL BUS YELLOW ENAMEL.
3. CONCRETE SHALL BE COMERCIAL GRADE CLASS 330 PSI, 1 1/2" MAX. AGGREGATE PER 2002 ODOT/APWA STANDARD SPECIFICATIONS.
4. FITTINGS ON THE "LIVE" SIDE OF THE AIR RELEASE VALVE SHALL BE BRASS.
5. FITTINGS ON THE INACTIVE SIDE OF THE VALVE MAY BE OR GALVANIZED.
6. GATE VALVE BELOW COMBINATION AIR RELEASE MAY BE INSTALLED VERTICALLY OR HORIZONTALLY DEPENDENT ON DEPTH.
7. IF SIDEWALKS ARE NOT INSTALLED BUT THERE IS CURB & GUTTER, INSTALL CONCRETE PAD 5' BEHIND CURB TO ALLOW FOR FUTURE SIDEWALK INSTALLATION.
8. ACTIVE LINE BETWEEN MAIN AND ARV SHALL NOT EXTEND BEHIND SIDEWALK AND SHALL BE AS SHORT AS POSSIBLE.
9. VENT TO BE LOCATED BEHIND SIDEWALK AS CLOSE AS POSSIBLE TO COMBINATION VALVE.
10. CENTER VALVE IN BOX.
11. STACKED BOXES SHALL FIT SNUGLY, NO GAPS.

NO.	DATE	INITIAL	REVISIONS
6	5/02	FMS	NOTE 6
7	1/04	FMS	NOTE 7
8	2/05	FMS	WATER STD DWG UPDATE
DESIGN: STAFF		DRAWN: FMS	APPROVED: DAP

**CITY OF GRANTS PASS  
ENGINEERING DIVISION**

**1" COMBINATION AIR  
AND VACUUM RELEASE VALVE**

SCALE: **NONE**      DWG. NO. **206**