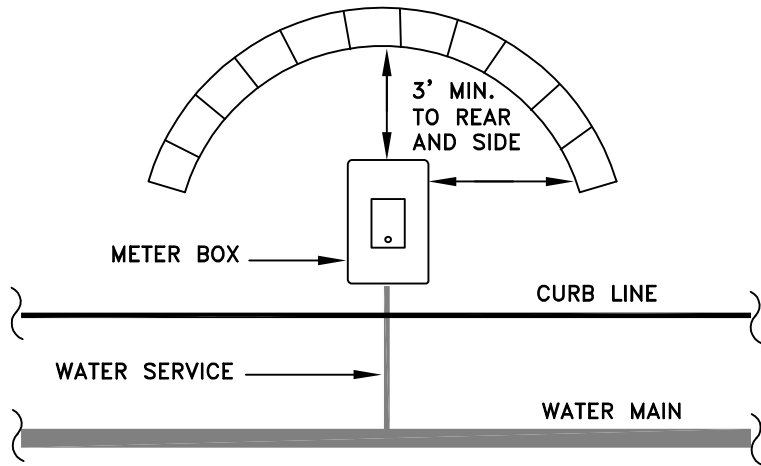


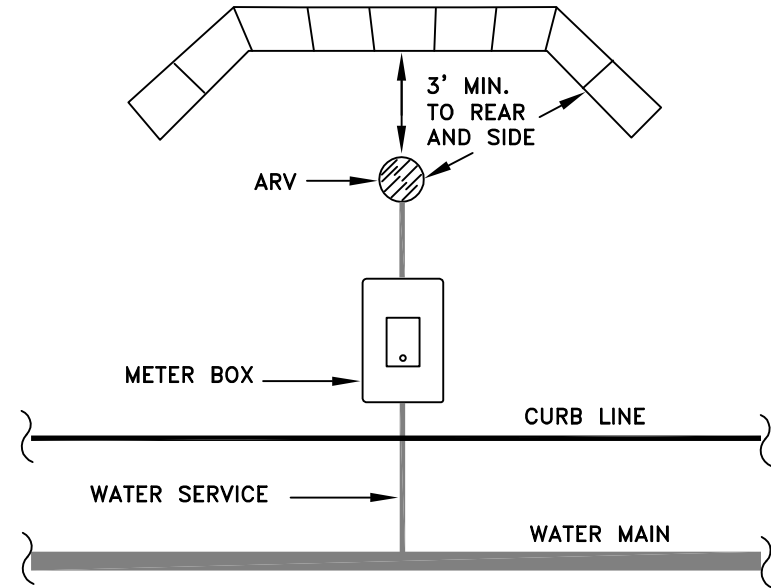
# WATER STRUCTURE ACCESS DETAIL

FOR CURB-ONLY STREET SECTIONS  
WITH CUT BANKS

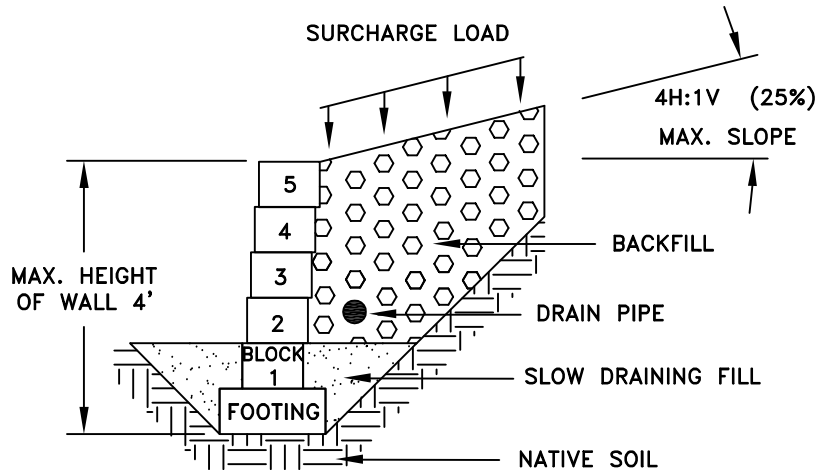
SAMPLE ARCHED RETAINING WALL



SAMPLE SQUARE/WINGED RETAINING WALL



SAMPLE RETAINING WALL PROFILE



NOTES:

- 1) ALL RETAINING WALLS IN THE PUBLIC RIGHT-OF-WAY OR CITY UTILITY EASEMENT MUST BE APPROVED AND PERMITTED BY THE ENGINEERING DIVISION.
- 2) WALLS OVER 4 FEET HIGH REQUIRE A BUILDING PERMIT. SEE GPDC SECTION 23.038.
- 3) ACCESS AREAS AROUND WATER STRUCTURES MUST BE KEPT CLEAR AT ALL TIMES.
- 4) DRAIN TO APPROVED LOCATION.
- 5) CONTACT WATER DEPT FOR LOCATION OF BACK-FLOW ASSEMBLIES.
- 6) MAXIMUM SLOPE BEHIND WALLS 25%.
- 7) WATER STRUCTURES TYPICALLY INCLUDE METER BOXES, ARV'S, FIRE HYDRANTS AND BLOW-OFF'S.

NO.	DATE	INITIAL	REVISIONS	CITY OF GRANTS PASS ENGINEERING DIVISION	
1	10-09	GLV	APPROVED	WATER STRUCTURE ACCESS	
				SCALE: NONE	DWG. NO. 203-A
DESIGN: STAFF		DRAWN: GLV		APPROVED: RJS	